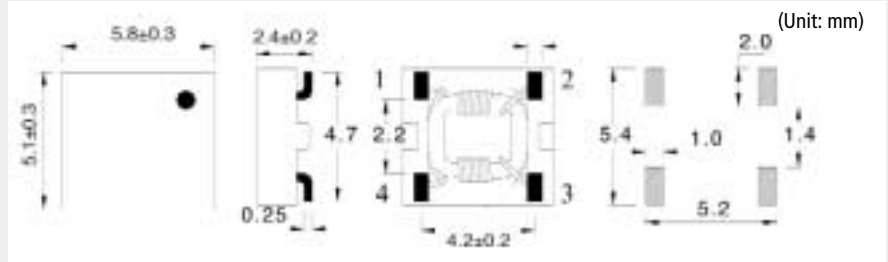


### EXTERNAL DIMENSIONS



### Test Equipment and Conditions

- Impedance measured using HP-4291B impedance analyzer with HP-16092 test fixture.
- DC Resistance with CH-502A meter.
- Operating Temperature Range: -40°C to +85°C.

### Features

- Compact size high performance and low cost.
- Large impedance at high frequencies.
- Excellent high frequency characteristics.
- Suitable for lead free soldering.

### Applications

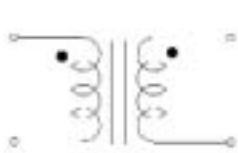
- Applied equipment: TV , VCR, Switching power sources, NC machines, Computes systems and Measuring instruments.

### Specifications

Part Number	Common Mode Impedance @100MHz ±25%	Rated Current (max.)	DC Resistance (max.)	Rated Voltage	Withstand Voltage
CYT331-301M	300Ω	2.5A	25mΩ	80VDC	AC150V/ 2mA/1min

### Circuit

### Test Mode

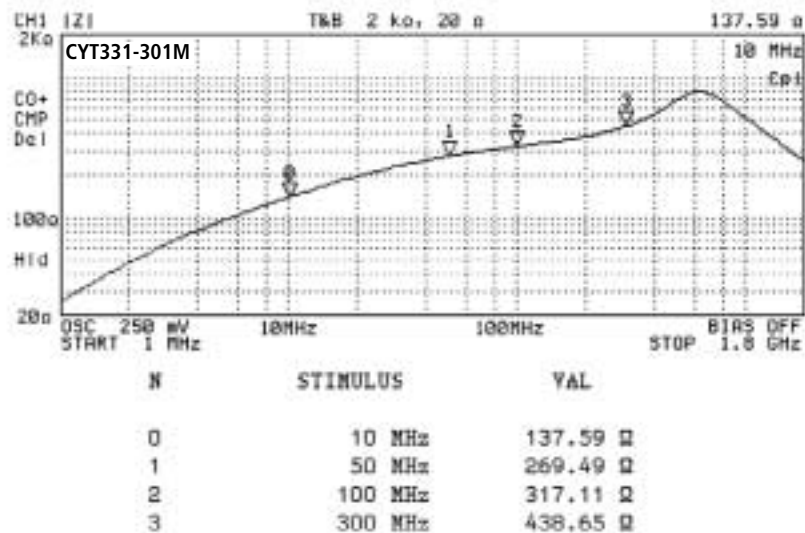


COMMON MODE

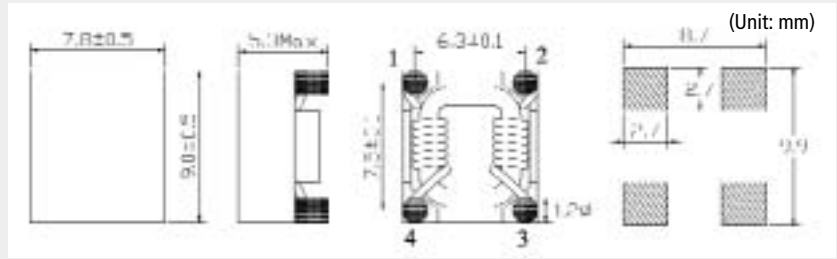


NORMAL MODE

### Impedance-Frequency Characteristics



### EXTERNAL DIMENSIONS



### Test Equipment and Conditions

- Impedance measured using HP-4291B impedance analyzer with HP-16092 test fixture.
- DC Resistance with CH-502A meter.
- Operating Temperature Range: -40°C to +85°C.

### Features

- Compact size high performance and low cost.
- Large impedance at high frequencies.
- Excellent high frequency characteristics.
- Suitable for lead free soldering.

### Applications

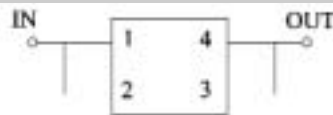
- Applied equipment: TV , VCR, Switching power sources, NC machines, Computes systems and Measuring instruments.

### Specifications

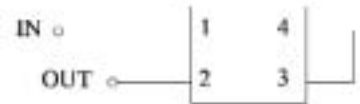
Part Number	Common Mode Impedance @100MHz ±25%	Rated Current (max.)	DC Resistance (max.)	Rated Voltage
CYT752-501	500Ω	5.0A	10mΩ	80VDC
CYT752-801	800Ω	3.5A	20mΩ	
CYT752-102	1000Ω	2.5A	50mΩ	

### Circuit

### Test Mode



COMMON MODE



NORMAL MODE

### Impedance-Frequency Characteristics

