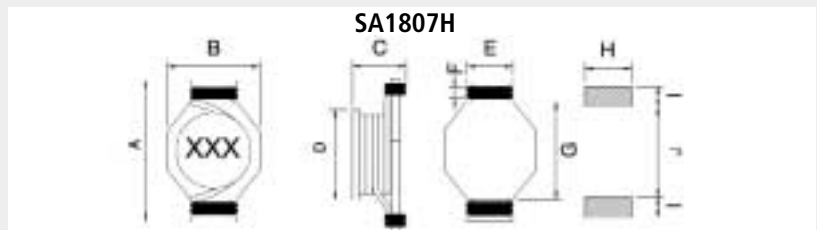
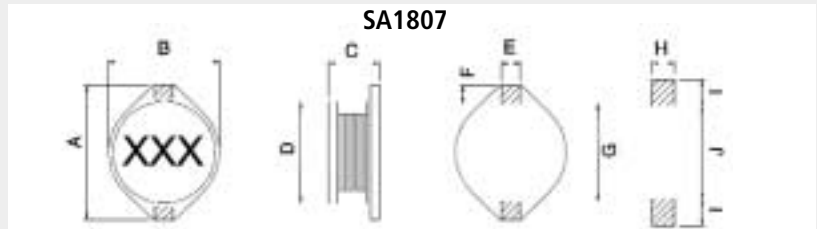
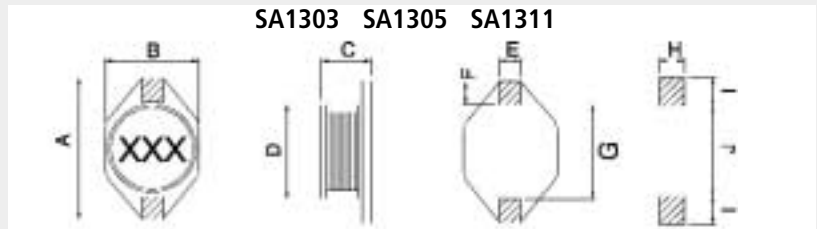
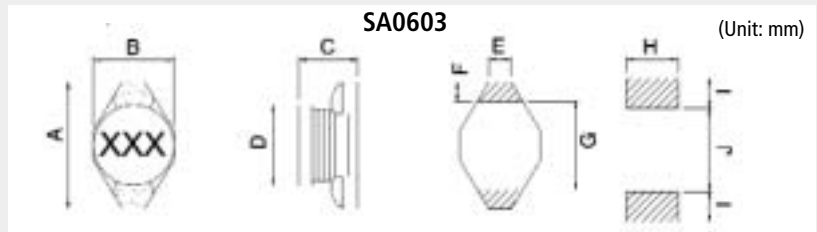


# POWER INDUCTOR (NON SHIELDED)

## POWER CHOKE - SA0603~SA1807H SERIES

### EXTERNAL DIMENSIONS



### Test Equipment and Conditions

- Inductance is measured with HP-4284A LCR meter or equivalent.
- 1. Inductance drops 10% typical at Isat level with temperature rise under 30°C in accordance with Irms measurement.
- 2. Inductance drops 10% typical at Isat level with temperature rise under 40°C in accordance with Irms measurement.
- Operating Temperature Range : -25°C to +85°C.

### Features

- Low profile very effective in space-conscious applications.
- Low resistance and high energy storage.
- Low resistance with high current rating.
- Suitable for lead free soldering.

### Applications

- For DC-DC Converter used in notebooks computers, PDA and mobile handphnes. Step-up or step-down converters, flash memory.

### Solder Land Information

Type	A	B	C	D	E	F	G	H	I	J
SA0603	6.60max.	4.45max.	2.92max.	4.00	1.27	1.00	4.32	2.64	1.14	4.57
SA1303	12.95max.	9.40max.	3.0max.	8.38	2.54	2.54	7.62	2.79	2.92	7.37
SA1305	12.95max.	9.40max.	5.21max.	8.38	2.54	2.54	7.62	2.79	2.92	7.37
SA1311	12.95max.	9.40max.	11.43max.	8.38	2.54	2.54	7.62	2.79	2.92	7.37
SA1807	18.54max.	15.24max.	7.11max.	12.7	2.54	2.54	12.7	2.79	2.92	12.45
SA1807H	22.35max.	16.26max.	8.0max.	12.7	8.3	2.00	15.0	8.64	3.18	17.53

# POWER INDUCTOR (NON SHIELDED)

## POWER CHOKE - SA0603/SA1303 SERIES

### Specifications

Part Number	Inductance (μH)	Test Frequency (KHz)	DC Resistance (Ω) max.	Isat (A) max.	Irms (A) max.
SA0603-1R0 □	1.0	100	0.06	2.90	2.00
SA0603-1R5 □	1.5	100	0.06	2.60	1.80
SA0603-2R2 □	2.2	100	0.07	2.30	1.60
SA0603-3R3 □	3.3	100	0.08	2.00	1.40
SA0603-4R7 □	4.7	100	0.135	1.50	1.00
SA0603-6R8 □	6.8	100	0.16	1.20	0.84
SA0603-100 □	10	100	0.20	1.10	0.77
SA0603-150 □	15	100	0.31	0.90	0.63
SA0603-220 □	22	100	0.43	0.70	0.49
SA0603-330 □	33	100	0.51	0.58	0.40
SA0603-470 □	47	100	0.84	0.50	0.35
SA0603-680 □	68	100	1.22	0.40	0.28
SA0603-101 □	100	100	1.77	0.31	0.21
SA0603-151 □	150	100	2.40	0.27	0.18
SA0603-221 □	220	100	3.76	0.22	0.15
SA0603-331 □	330	100	5.71	0.18	0.13
SA0603-471 □	470	100	7.80	0.16	0.11
SA0603-681 □	680	100	11.23	0.14	0.10
SA0603-102 □	1000	100	19.50	0.10	0.07

NOTE: □ Tolerance value: K = ±10%, M = ±20%.

### Specifications

Part Number	Inductance (μH)	Test Frequency (KHz)	DC Resistance (Ω) max.	Isat (A) max.	Irms (A) max.
SA1303-100 □	10	100	0.090	2.40	2.00
SA1303-150 □	15	100	0.120	2.00	1.50
SA1303-220 □	22	100	0.190	1.60	1.30
SA1303-330 □	33	100	0.250	1.40	1.10
SA1303-470 □	47	100	0.320	1.00	0.80
SA1303-560 □	56	100	0.300	0.95	0.75
SA1303-680 □	68	100	0.550	0.90	0.70
SA1303-101 □	100	100	0.700	0.70	0.60
SA1303-151 □	150	100	1.000	0.60	0.50
SA1303-221 □	220	100	1.600	0.50	0.40
SA1303-331 □	330	100	2.200	0.40	0.30
SA1303-471 □	470	100	3.300	0.30	0.20
SA1303-681 □	680	100	4.400	0.20	0.10
SA1303-102 □	1000	100	7.000	0.10	0.05

NOTE: □ Tolerance value: J = ±5%, K = ±10%, M = ±20%.

# POWER INDUCTOR (NON SHIELDED)

## POWER CHOKE - SA1305/1311 SERIES

### Specifications

Part Number	Inductance (μH)	Test Frequency (KHz)	DC Resistance (Ω) max.	Isat (A) max.	Irms (A) max.
SA1305-1R0 □	1.0	100	0.009	9.00	6.80
SA1305-1R5 □	1.5	100	0.010	8.00	6.40
SA1305-2R2 □	2.2	100	0.012	7.00	6.10
SA1305-3R3 □	3.3	100	0.015	6.40	5.40
SA1305-4R7 □	4.7	100	0.018	5.40	4.80
SA1305-6R8 □	6.8	100	0.027	4.60	4.40
SA1305-100 □	10	100	0.038	3.80	3.90
SA1305-150 □	15	100	0.049	3.00	3.10
SA1305-220 □	22	100	0.085	2.60	2.70
SA1305-330 □	33	100	0.100	2.00	2.10
SA1305-470 □	47	100	0.140	1.60	1.80
SA1305-560 □	56	100	0.162	1.50	1.70
SA1305-680 □	68	100	0.200	1.40	1.50
SA1305-101 □	100	100	0.280	1.20	1.30
SA1305-151 □	150	100	0.400	1.00	1.00
SA1305-221 □	220	100	0.610	0.80	0.80
SA1305-331 □	330	100	1.020	0.60	0.60
SA1305-471 □	470	100	1.270	0.50	0.50
SA1305-681 □	680	100	2.020	0.40	0.40
SA1305-102 □	1000	100	3.000	0.30	0.30
SA1311-1R0 □	1.0	100	0.010	11.60	6.80
SA1311-1R5 □	1.5	100	0.010	11.00	6.60
SA1311-2R2 □	2.2	100	0.013	10.50	6.10
SA1311-2R7 □	2.7	100	0.014	10.00	5.60
SA1311-100 □	10	100	0.033	8.00	3.50
SA1311-150 □	15	100	0.042	7.00	3.00
SA1311-220 □	22	100	0.054	5.50	2.50
SA1311-330 □	33	100	0.080	4.00	2.00
SA1311-470 □	47	100	0.100	3.80	1.60
SA1311-680 □	68	100	0.170	3.00	1.20
SA1311-101 □	100	100	0.220	2.50	1.20
SA1311-151 □	150	100	0.340	2.00	0.90
SA1311-221 □	220	100	0.440	1.60	0.70
SA1311-331 □	330	100	0.700	1.20	0.60
SA1311-471 □	470	100	0.950	1.00	0.30
SA1311-681 □	680	100	1.200	1.00	0.20
SA1311-102 □	1000	100	2.000	0.80	0.10

NOTE: □ Tolerance value: J = ±5%, K = ±10%, M = ±20%.

# POWER INDUCTOR (NON SHIELDED)

## POWER CHOKE - SA1807/SA1807H SERIES

### Specifications

Part Number	Inductance (μH)	Test Frequency (KHz)	DC Resistance (Ω) max.	Isat (A) max.	Irms (A) max.
SA1807-1R0 □	1.0	100	0.009	20	8.60
SA1807-2R2 □	2.2	100	0.014	16	7.10
SA1807-3R3 □	3.3	100	0.018	14	6.20
SA1807-5R6 □	5.6	100	0.020	12	5.30
SA1807-100 □	10	100	0.031	10	4.30
SA1807-150 □	15	100	0.036	8.0	4.00
SA1807-220 □	22	100	0.047	7.0	3.50
SA1807-330 □	33	100	0.066	5.5	3.00
SA1807-470 □	47	100	0.086	4.5	2.60
SA1807-680 □	68	100	0.130	3.5	2.30
SA1807-101 □	100	100	0.190	3.0	1.80
SA1807-151 □	150	100	0.250	2.6	1.50
SA1807-221 □	220	100	0.380	2.4	1.20
SA1807-331 □	330	100	0.560	1.9	1.00
SA1807-471 □	470	100	0.850	1.4	0.82
SA1807-681 □	680	100	1.100	1.2	0.72
SA1807-102 □	1000	100	1.800	1.0	0.56

NOTE: □ Tolerance value: J = ±5%, K = ±10%, M = ±20%.

### Specifications

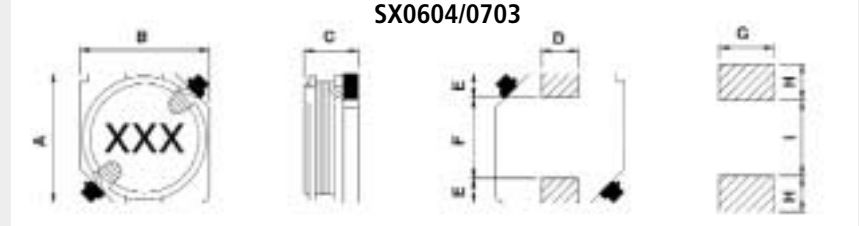
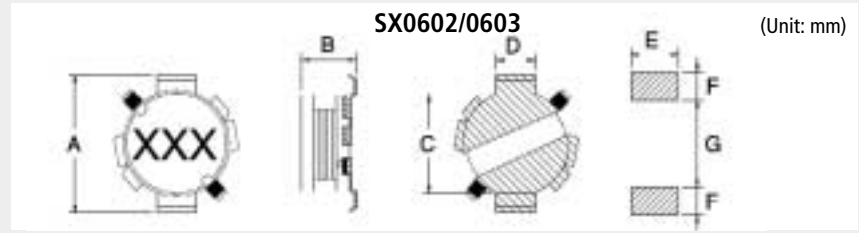
Part Number	Inductance (μH)	Test Frequency (KHz)	DC Resistance (Ω) max.	Isat (A) max.	Irms (A) max.
SA1807H-R78 □	0.78	100	0.0022	30.0	21.0
SA1807H-1R2 □	1.2	100	0.0035	27.0	19.0
SA1807H-1R5 □	1.5	100	0.0040	24.0	18.0
SA1807H-2R2 □	2.2	100	0.0061	20.0	15.0
SA1807H-3R3 □	3.3	100	0.0072	17.0	13.0
SA1807H-3R9 □	3.9	100	0.010	15.0	12.0
SA1807H-4R7 □	4.7	100	0.011	13.0	10.0
SA1807H-6R0 □	6.0	100	0.014	12.0	9.0
SA1807H-6R8 □	6.8	100	0.016	11.5	8.7
SA1807H-7R8 □	7.8	100	0.017	11.0	8.5
SA1807H-100 □	10.0	100	0.023	10.0	7.5
SA1807H-150 □	15.0	100	0.034	8.0	7.0
SA1807H-220 □	22.0	100	0.045	7.0	6.0

NOTE: □ Tolerance value: K = ±10%, M = ±20%, N = ±30%.

# POWER INDUCTOR (NON SHIELDED)

## POWER CHOKE - SX0602~SX703 SERIES

### EXTERNAL DIMENSIONS



### Test Equipment and Conditions

- Inductance is measured with HP-4284A LCR meter or equivalent.
- Maximum allowable DC current which causes 10% inductance reduction of the initial value, or coil temperature to rise by 40°C, whichever is smaller. (Reference ambient temperature 20°C).
- Operating Temperature Range : -25°C to +85°C.

### Features

- Surface mount inductor with high current rating.
- Low resistance to keep power loss minimum.
- Packed in embossed carrier tape and can be used by automatic mounting machine.
- Suitable for lead free soldering.

### Applications

- For power line DC-DC conversion applications used in hard disk, notebook computers and other electronic equipment.

### Solder Land Information

Type	A	B	C	D	E	F	G	H	I
<b>SX0602</b>	7.3max.	2.9max.	5.0	2.0	3.0	2.0	4.4		
<b>SX0603</b>	7.3max.	3.3max.	5.0	2.0	3.0	2.0	4.4		
<b>SX0604</b>	7.6max.	7.6max.	5.0max.	1.7	1.2	4.6	2.7	2.0	4.4
<b>SX0703</b>	7.6max.	7.6max.	3.0max.	2.0	1.3	4.4	3.0	2.0	4.0

# POWER INDUCTOR (NON SHIELDED)

## POWER CHOKE - SX0602/SX603 SERIES

### Specifications

Part Number	Inductance (μH)	Test Frequency (KHz)	DC Resistance (Ω) max.	Rated DC Current (A) max.
SX0602-1R2 □	1.2	100	0.02	3.40
SX0602-1R5 □	1.5	100	0.03	3.10
SX0602-2R4 □	2.4	100	0.04	2.40
SX0602-3R3 □	3.3	100	0.05	2.20
SX0602-4R7 □	4.7	100	0.07	1.80
SX0602-6R8 □	6.8	100	0.10	1.60
SX0602-100 □	10	100	0.14	1.30
SX0602-120 □	12	100	0.18	1.20
SX0602-150 □	15	100	0.20	1.00
SX0602-180 □	18	100	0.24	0.95
SX0602-220 □	22	100	0.27	0.90
SX0602-270 □	27	100	0.37	0.75
SX0602-330 □	33	100	0.43	0.70
SX0602-390 □	39	100	0.47	0.62
SX0602-470 □	47	100	0.66	0.56
SX0602-560 □	56	100	0.74	0.51
SX0602-680 □	68	100	1.01	0.45
SX0602-820 □	82	100	1.13	0.43
SX0602-101 □	100	100	1.31	0.41
SX0603-151 □	150	100	1.9	0.38
SX0603-181 □	180	100	2.3	0.35
SX0603-221 □	220	100	3.0	0.30
SX0603-271 □	270	100	3.5	0.26
SX0603-331 □	330	100	4.2	0.23
SX0603-391 □	390	100	4.8	0.21
SX0603-471 □	470	100	5.7	0.19
SX0603-561 □	560	100	6.4	0.18
SX0603-681 □	680	100	7.6	0.17
SX0603-821 □	820	100	10	0.14
SX0603-102 □	1000	100	12	0.13
SX0603-122 □	1200	100	16	0.11
SX0603-152 □	1500	100	19	0.10
SX0603-182 □	1800	100	28	0.08
SX0603-222 □	2200	100	30	0.075
SX0603-272 □	2700	100	36	0.070
SX0603-332 □	3300	100	48	0.065
SX0603-392 □	3900	100	54	0.055
SX0603-472 □	4700	100	63	0.050
SX0603-562 □	5600	100	72	0.048

NOTE: □ Tolerance value: J = ±5%, K = ±10%, M = ±20%, N = ±30%

# POWER INDUCTOR (NON SHIELDED)

## POWER CHOKE - SX0604 SERIES

### Specifications

Part Number	Inductance (μH)	Test Frequency (KHz)	DC Resistance (Ω) max.	Rated DC Current (A) max.
SX0604-100 □	10	100	0.120	1.50
SX0604-120 □	12	100	0.130	1.44
SX0604-150 □	15	100	0.150	1.36
SX0604-180 □	18	100	0.160	1.30
SX0604-220 □	22	100	0.190	1.23
SX0604-270 □	27	100	0.210	1.11
SX0604-330 □	33	100	0.240	1.00
SX0604-390 □	39	100	0.270	0.93
SX0604-470 □	47	100	0.390	0.85
SX0604-560 □	56	100	0.450	0.75
SX0604-680 □	68	100	0.500	0.70
SX0604-820 □	82	100	0.560	0.65
SX0604-101 □	100	100	1.000	0.52
SX0604-121 □	120	100	1.050	0.50
SX0604-151 □	150	100	1.200	0.45
SX0604-181 □	180	100	1.350	0.40
SX0604-221 □	220	100	1.520	0.38
SX0604-271 □	270	100	1.720	0.35
SX0604-331 □	330	100	2.700	0.30
SX0604-391 □	390	100	2.960	0.28
SX0604-471 □	470	100	3.360	0.26
SX0604-561 □	560	100	3.790	0.24
SX0604-681 □	680	100	4.330	0.21
SX0604-821 □	820	100	5.260	0.19
SX0604-102 □	1000	100	6.220	0.17

NOTE: □ Tolerance value: J = ±5%, K = ±10%, M = ±20%, N = ±30%

# POWER INDUCTOR (NON SHIELDED)

## POWER CHOKE - SX0703 SERIES

### Specifications

Part Number	Inductance (μH)	Test Frequency (KHz)	DC Resistance (Ω) max.	Rated DC Current (A) max.
SX0703-1R0 □	1.0	100	0.02	3.60
SX0703-1R5 □	1.5	100	0.03	3.40
SX0703-2R2 □	2.2	100	0.03	2.68
SX0703-3R3 □	3.3	100	0.04	2.40
SX0703-4R7 □	4.7	100	0.06	2.26
SX0703-6R8 □	6.8	100	0.08	1.66
SX0703-100 □	10	100	0.12	1.37
SX0703-120 □	12	100	0.14	1.12
SX0703-150 □	15	100	0.18	1.08
SX0703-180 □	18	100	0.20	1.04
SX0703-220 □	22	100	0.27	0.80
SX0703-270 □	27	100	0.32	0.77
SX0703-330 □	33	100	0.35	0.71
SX0703-390 □	39	100	0.48	0.62
SX0703-470 □	47	100	0.56	0.56
SX0703-560 □	56	100	0.63	0.54
SX0703-680 □	68	100	0.71	0.50
SX0703-820 □	82	100	0.97	0.43
SX0703-101 □	100	100	1.08	0.39

NOTE: □ Tolerance value: K = ±10%, M = ±20%, N = ±30%